

INSTALL:

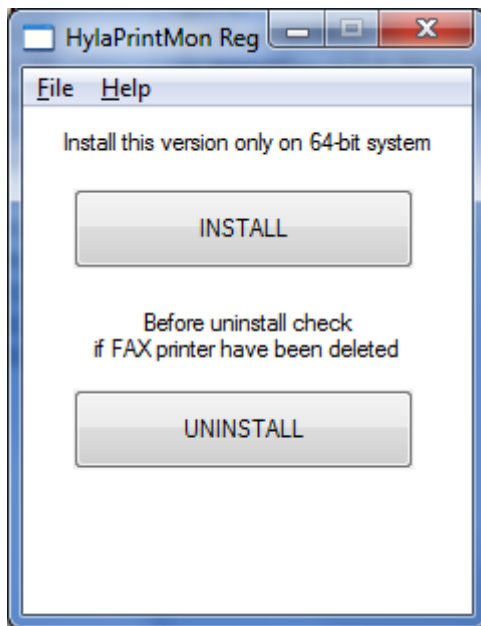
OS: Windows 7 (32/ 64 bit), Windows Vista, Windows XP

Please choose the right package for your system (32-bit or 64-bit).

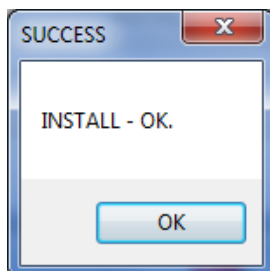
Directory „c:/temp“ must be writable for this program.

Installation of WinPrint HylaFax (original version) has to be uninstalled and printer removed.

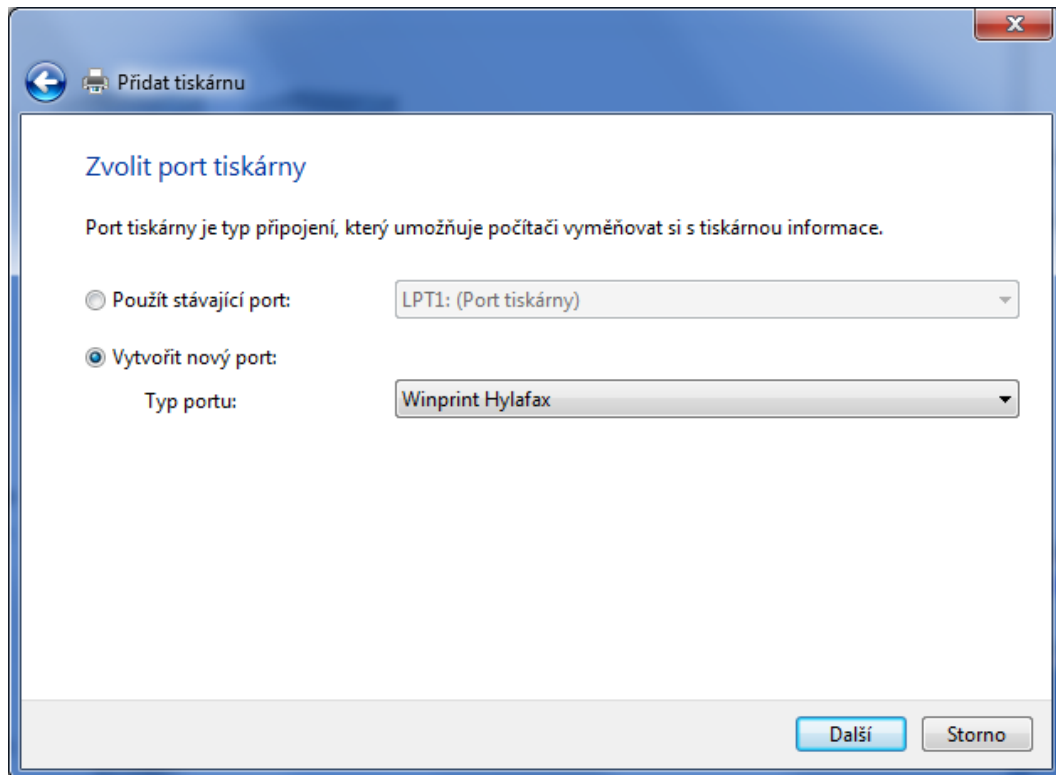
- 1) Copy „HylaPrintMon.dll“ and „HylaPrintUI.exe“ to C:\Windows\System32 directory. In **x64** systems **copy files by Windows Explorer!** Not any 32-bit programs as Total Commander, because they can't explore C:\Windows\System32 directory!! 32-bit programs put files into C:\Windows\SysWOW64 and this is wrong.
- 2) Run As Administrator „HylaPrintMonReg.exe“ and click „INSTALL“.



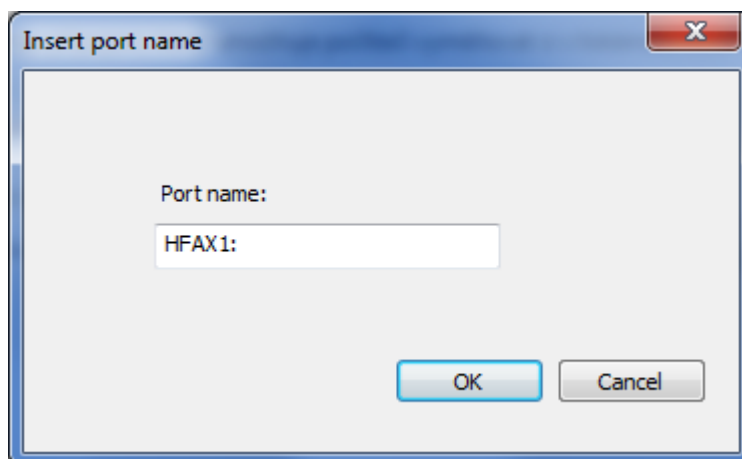
Result must be OK.



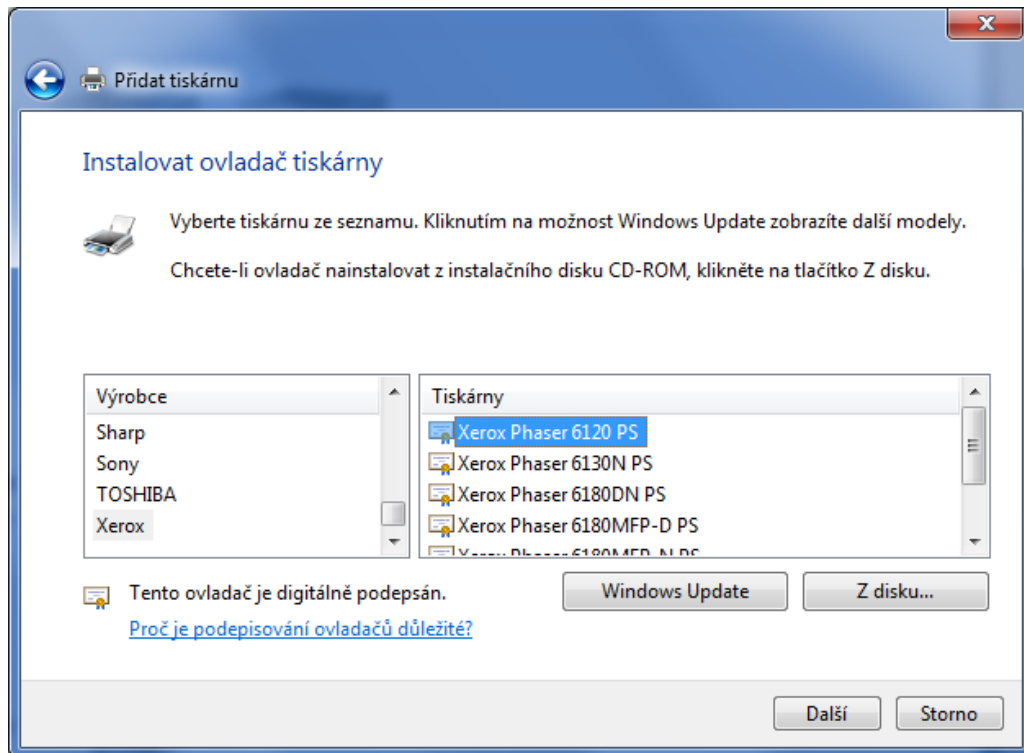
- 3) AddPrinter (same as WinPrint Hylafax - <http://winprinthylafax.sourceforge.net/>)



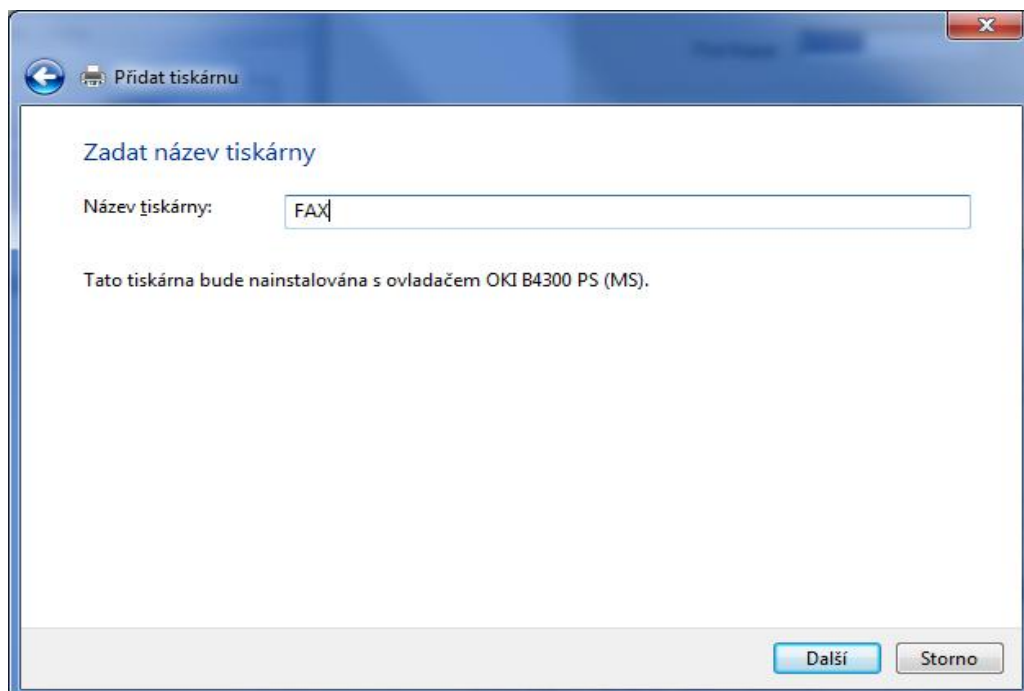
- 4) Port name - default is OK



- 5) Select printer type (Manufacturer XEROX, printer Xerox Phaser 6120 PS) – for Windows 7 and Vista (**THANK YOU for James Smith**) or Apple 12/640 PS on WinXP(same as original version WinPrint HylaFax)

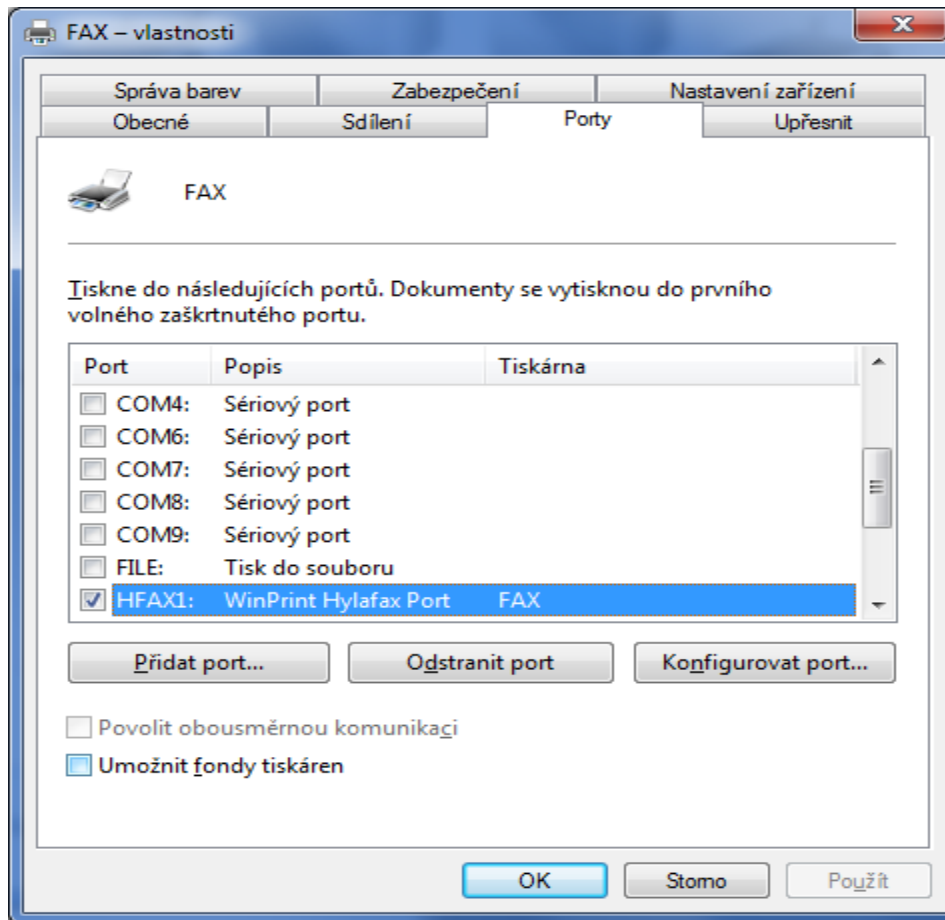


- 6) Insert name for printer



Do not share the printer.

- 7) Configure port. Right-click on the printer to call up its properties, and select the "Ports" tab. Locate the port you just created.



Printer port settings

Use active connection: ☐ Incoming port: 32001 Ignore PASV IP: ☐

HylaFax server: 192.168.1.125 Port: 4559

Username: fax

Password: 1234

Email: asd@asd.com

Notification: Failure and Success

Modem:

Address Book Directory: C:\Users\Michal\Documents [Browse ...](#)

Page size: A4

Resolution: Fine

Version: 1.0.0.7

OK Cancel

Settings are the same as WinPrint HylaFax.

- **Use active connection** is for active connection to HylaFAX server. Use this option only when you are on the same LAN as HylaFAX server or when you can forward incoming port by router. Type your **incoming port** for incoming connection from HylaFAX server.

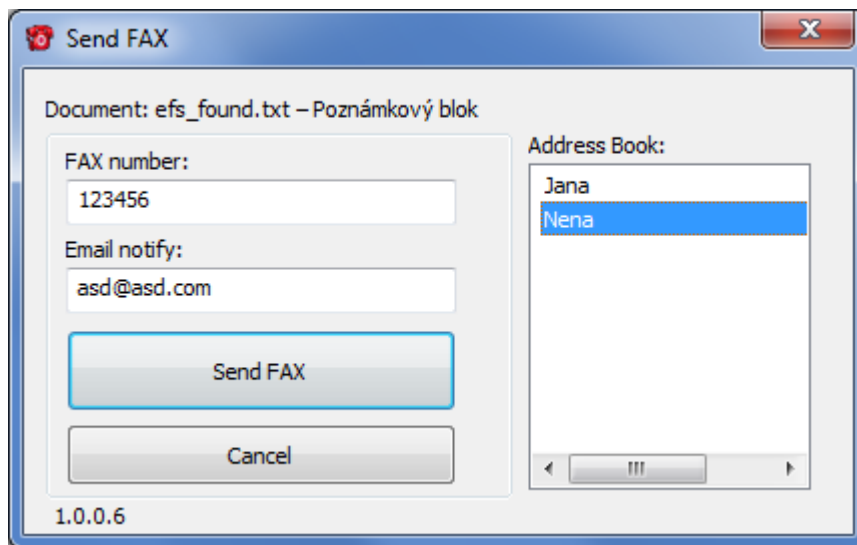
Uncheck (default) is for passive connection and it works well in most cases. HylaFAX server has to open ports for passive FTP connection on firewall (1024 - 65535).

- **HylaFax Server** is IP address or name of HylaFax Server.
- **Port** is Hylafax Server port, default port is 4559
- Enter your **Username** and **Password** of HylaFax Server
- Enter **email** for notification about your FAX job and select **notification type**

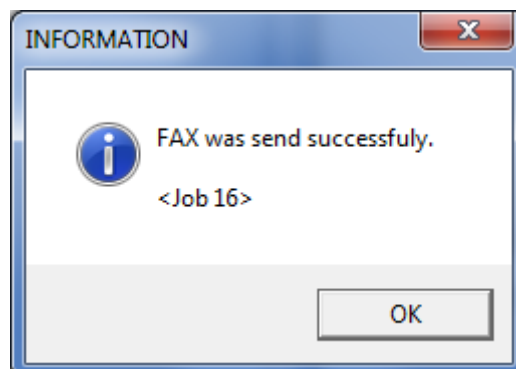
- **Modem** is for HylaFax Servers where are configured modem groups. Look at documentation HylaFax about ModemGroup:
- **Address Book Directory** is directory for all users (writable) where program will create file „addrbook.csv“ and where will be stored address book data (name and number) for sending FAXes. To create item right click mouse above Address Book pane on Send FAX dialog.
- **Page size** is page size (mostly A4)
- **Resolution** is resolution for printer. Default is Fine and this is fine.
- **Ignore PASV IP** is for special purposes (default uncheck)

Click OK

- 8) For faxing you must print document. Then you will see popup window. Just insert fax number and click send fax. Only following 2 windows are translated to target language version.

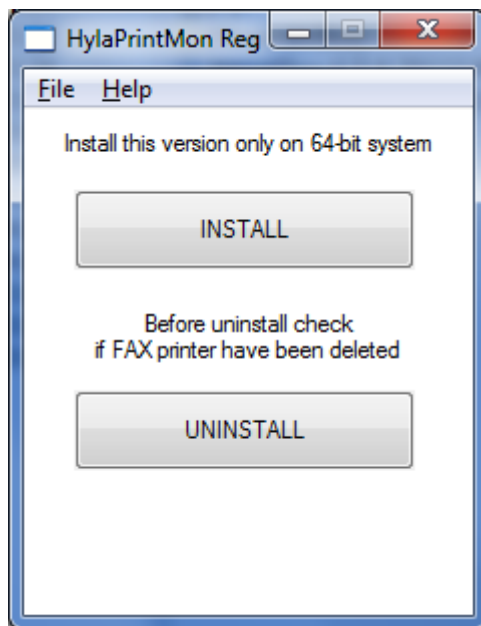


After several seconds you will see resolution about your Job. And after several minutes you will get notification email.

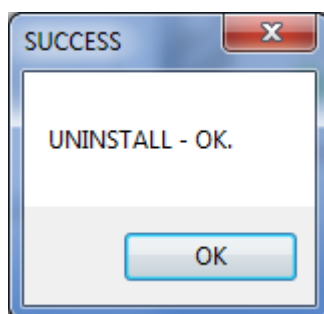


UNINSTALL

- 1) Remove printer
- 2) Run As Administrator „HylaPrintMonReg.exe“ and click „UNINSTALL“.



Result must be OK.



- 3) Remove „HylaPrintMon.dll“ and „HylaPrintUI.exe“ from C:\Windows\System32

PRINTER QUEUE

When you can't delete Print Job from print queue (this is a universal problem windows)

Do following:

- 1) **Run as administrator** Command Prompt
(Click on Windows 7 Start Button, Go to All Programs-> Accessories
Now right on Command Prompt and select "Run as Administrator" from
context menu.

- 2) Enter the following:

```
net stop spooler (and hit enter)
```

- 3) Delete all files in the following folder:

```
C:\Windows\System32\Spool\Printers
```

- 4) Once the spool files are deleted, start the spooler again:

```
net start spooler
```